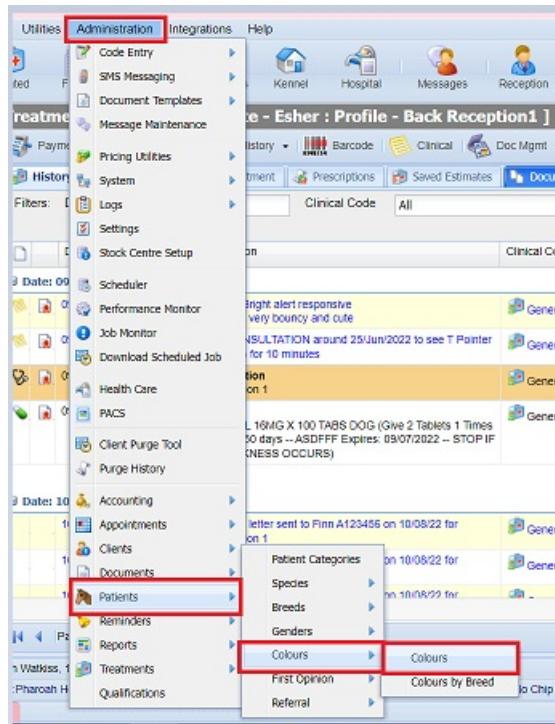


# Adding a new colour

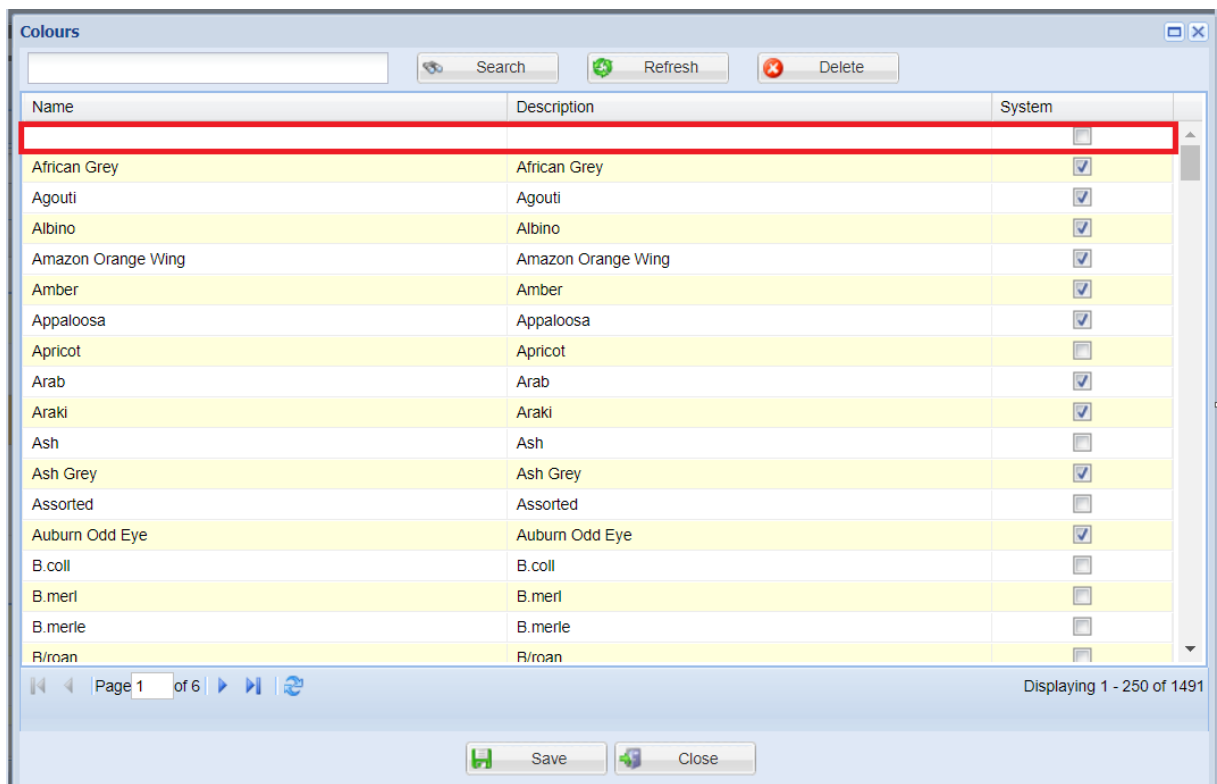
09/06/2025 11:46 am BST

## Adding a new colour

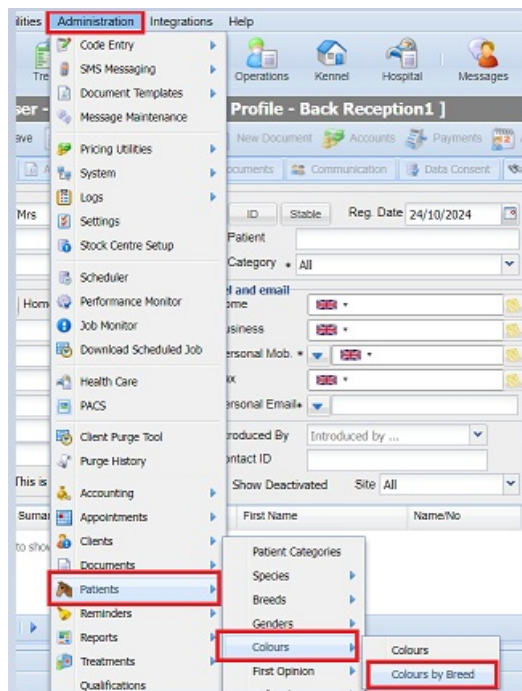
1. To add a new colour, navigate to Administration>Patients>Colours>Colours.



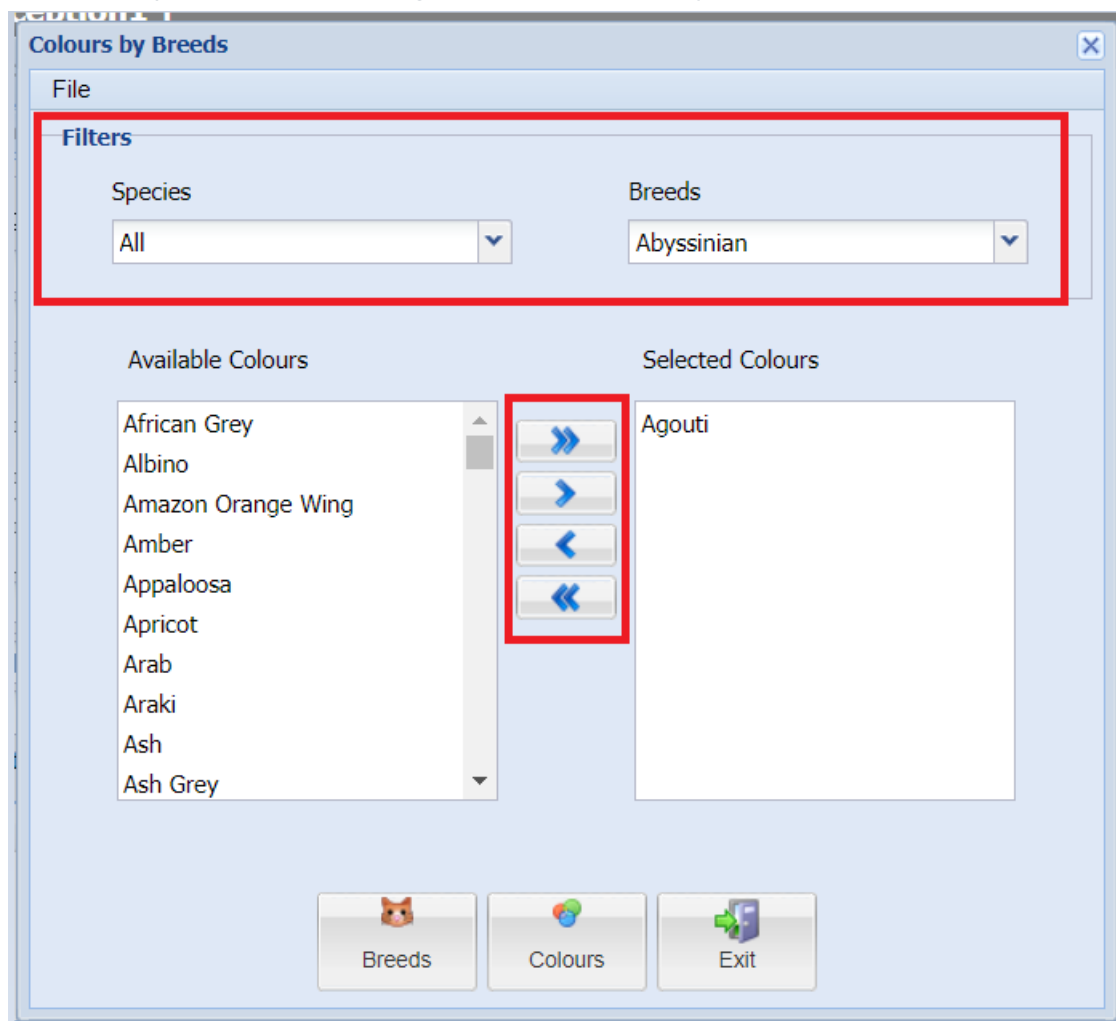
2. The Colours screen will load, in the top row you can type the 'Name' and 'Description', once this has been filled in tick the 'System' box for this colour to show. Click 'Save'.



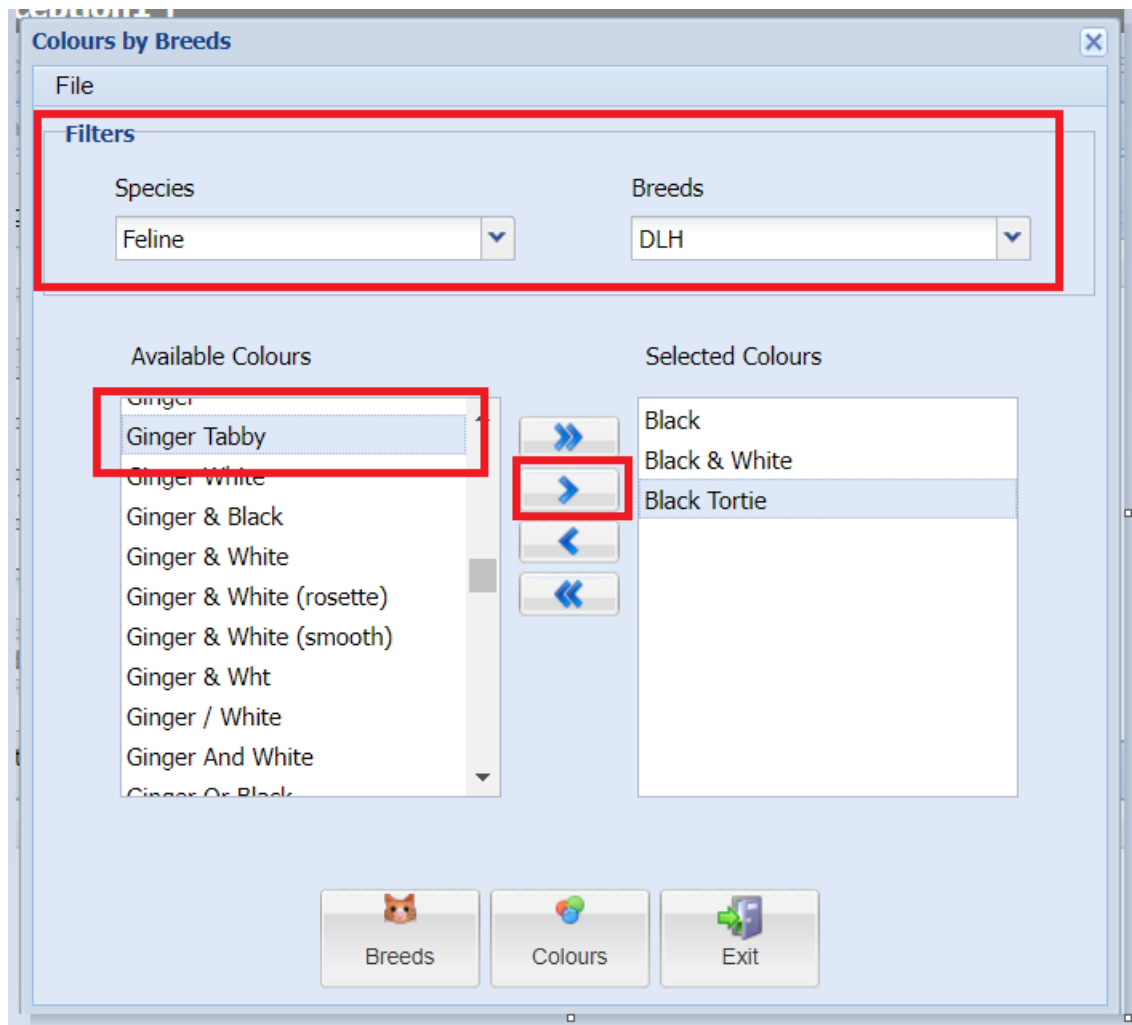
3. To be able to use the newly added colour, it needs to be linked to a species and breed. To do this, navigate to Administration>Patients>Colours>Colours by Breed.



4. In the 'Colours by Breeds' screen, using the filters select the 'Species' and then the 'Breeds'.



5. Search for the colour, and using the arrows move these across to the 'Selected Colours' box.



Note - this can take up to 24 hours to display in the Patient Details screen.