

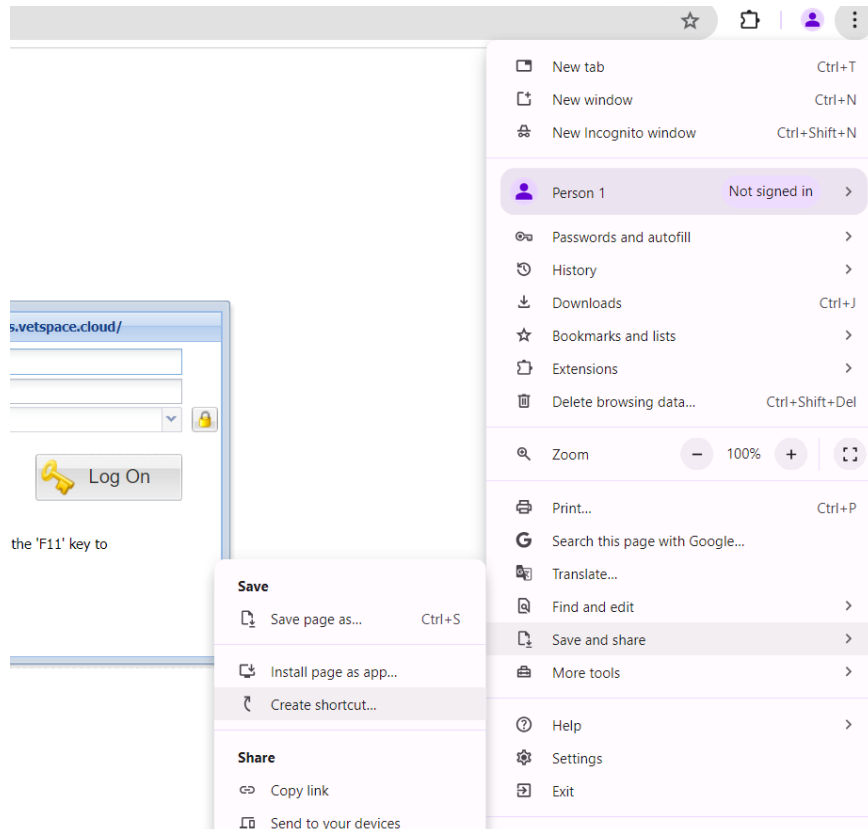
Create a Merlin Shortcut

23/10/2024 9:38 am BST

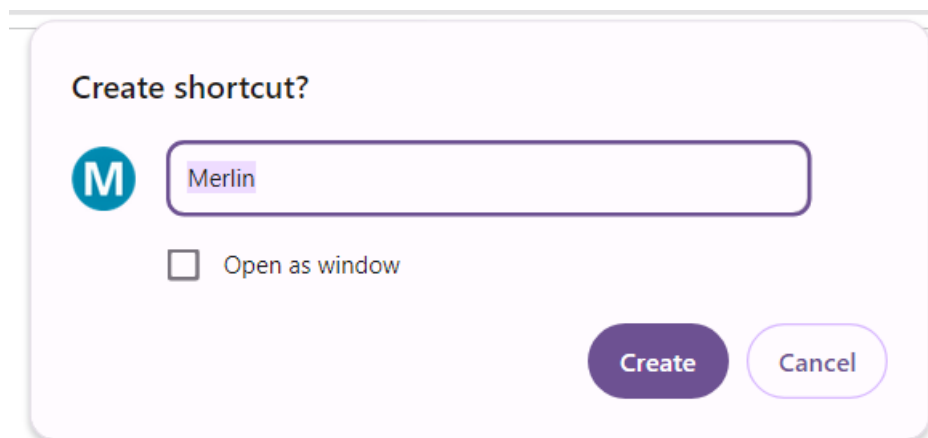
To create a Merlin Shortcut from your initial login screen, select the 3 dots in the top righthand corner of the browser.

Google Chrome

Click on Save and Share toward the bottom of the list, now choose Create Shortcut.



You will then see a popup requesting confirmation that you wish to create a Merlin shortcut.

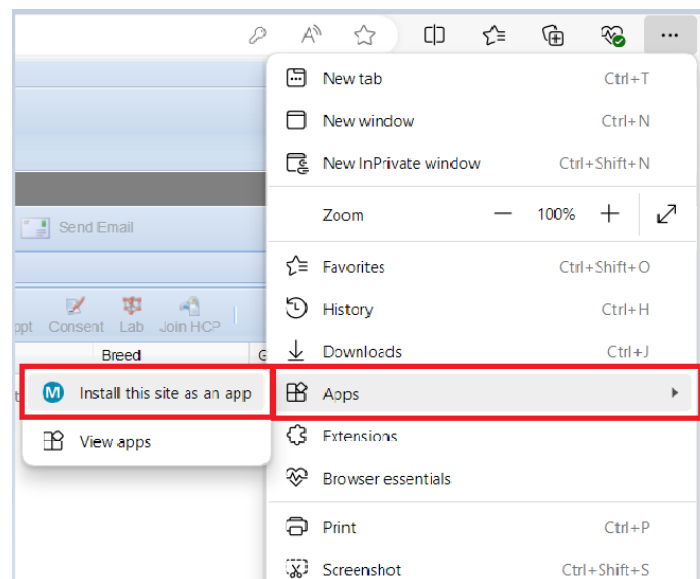


You now have the option to rename as you wish. Once you select Create you will see a Merlin icon has been saved on your desktop. Anytime you select this icon you will directed to the Merlin login

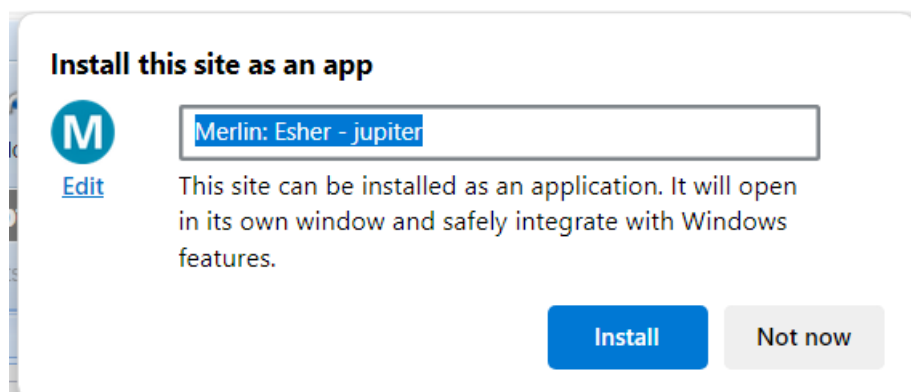
page.

Microsoft Edge

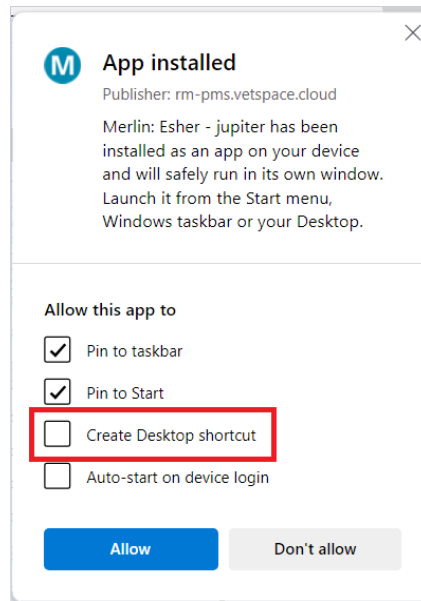
Click on 'Apps' and 'Install this site as an app' with the pop up



This will produce a pop up, which can be renamed if required. Click on 'Install'.



From the next pop up tick the 'Create Desktop shortcut' and then 'Allow'



A Merlin icon has been saved on your desktop. Anytime you select this icon you will directed to the Merlin login page.
